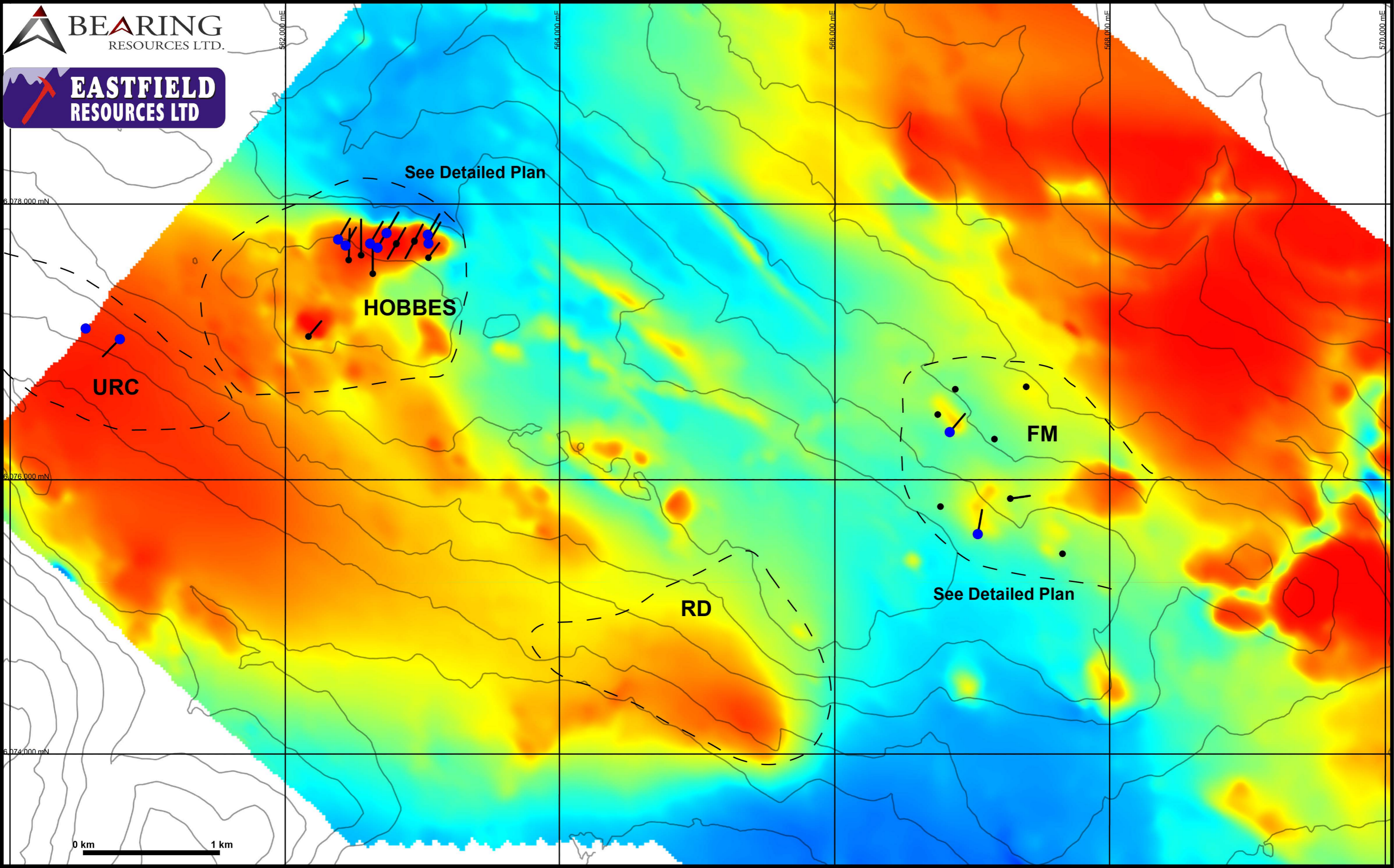
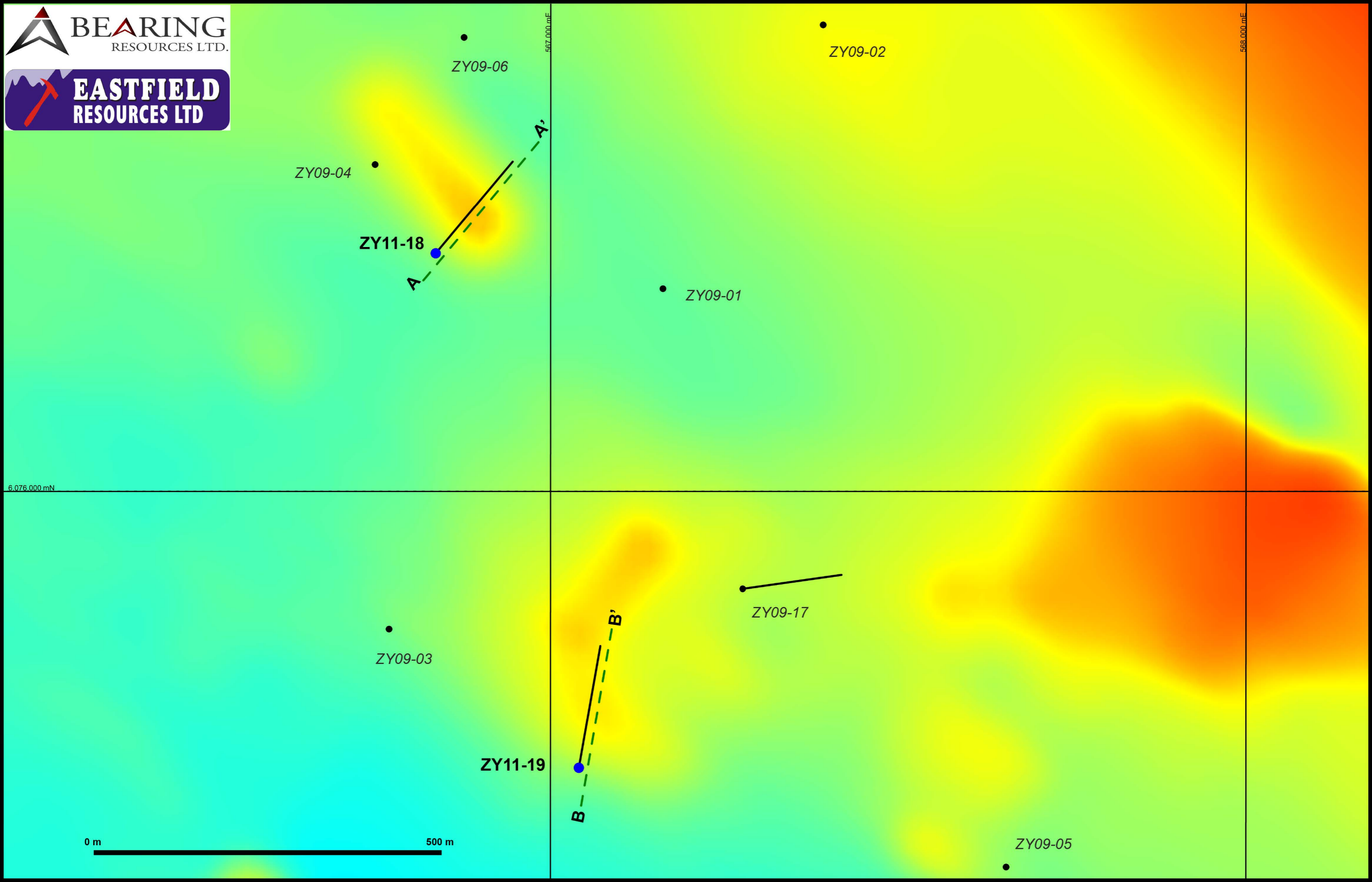


ZYMO PROJECT - DRILL PLAN ON REDUCED TO POLE MAGNETICS



ZYMO PROJECT - FM ZONE DRILL PLAN ON REDUCED TO POLE MAGNETICS



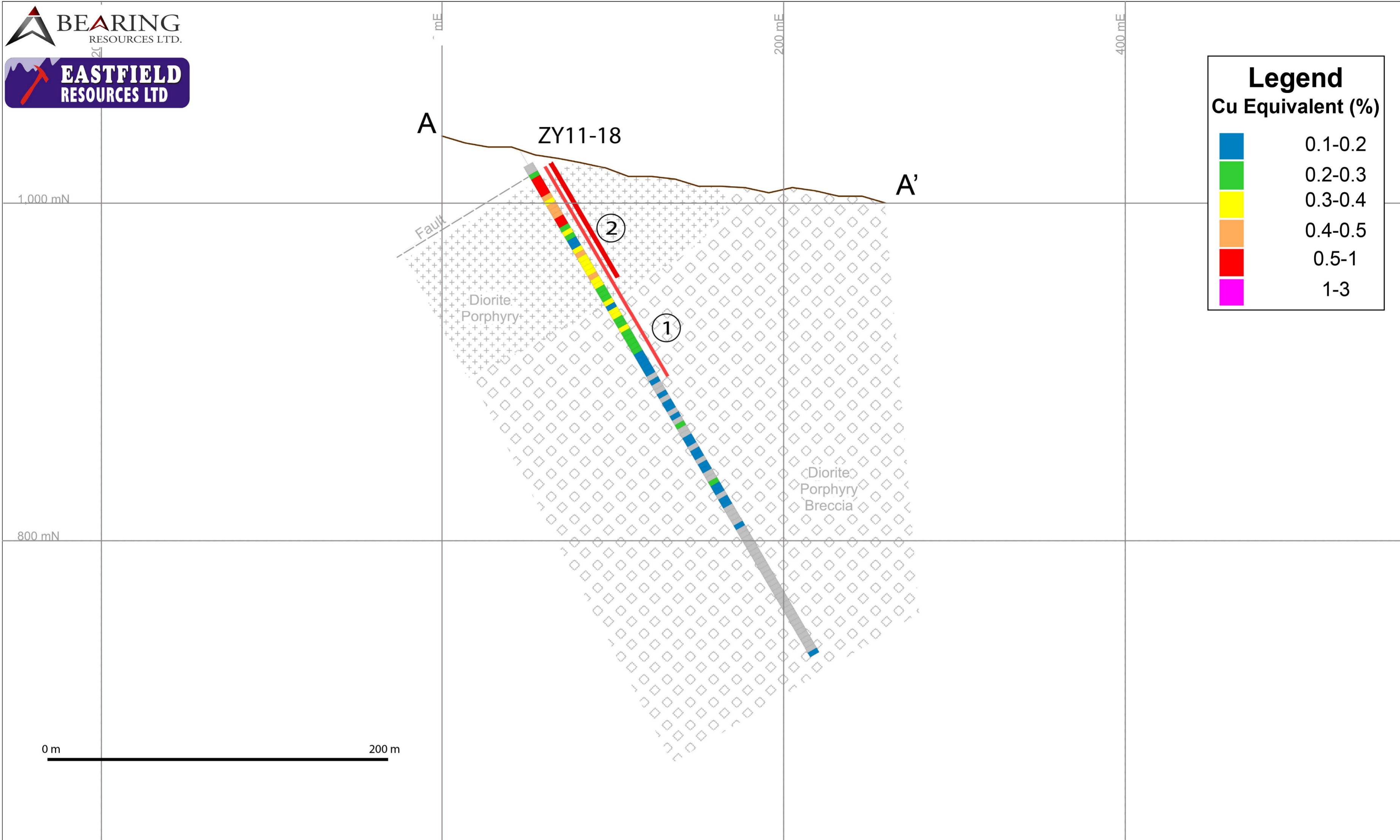
6,076,000 mN

567,000 mE

568,000 mE

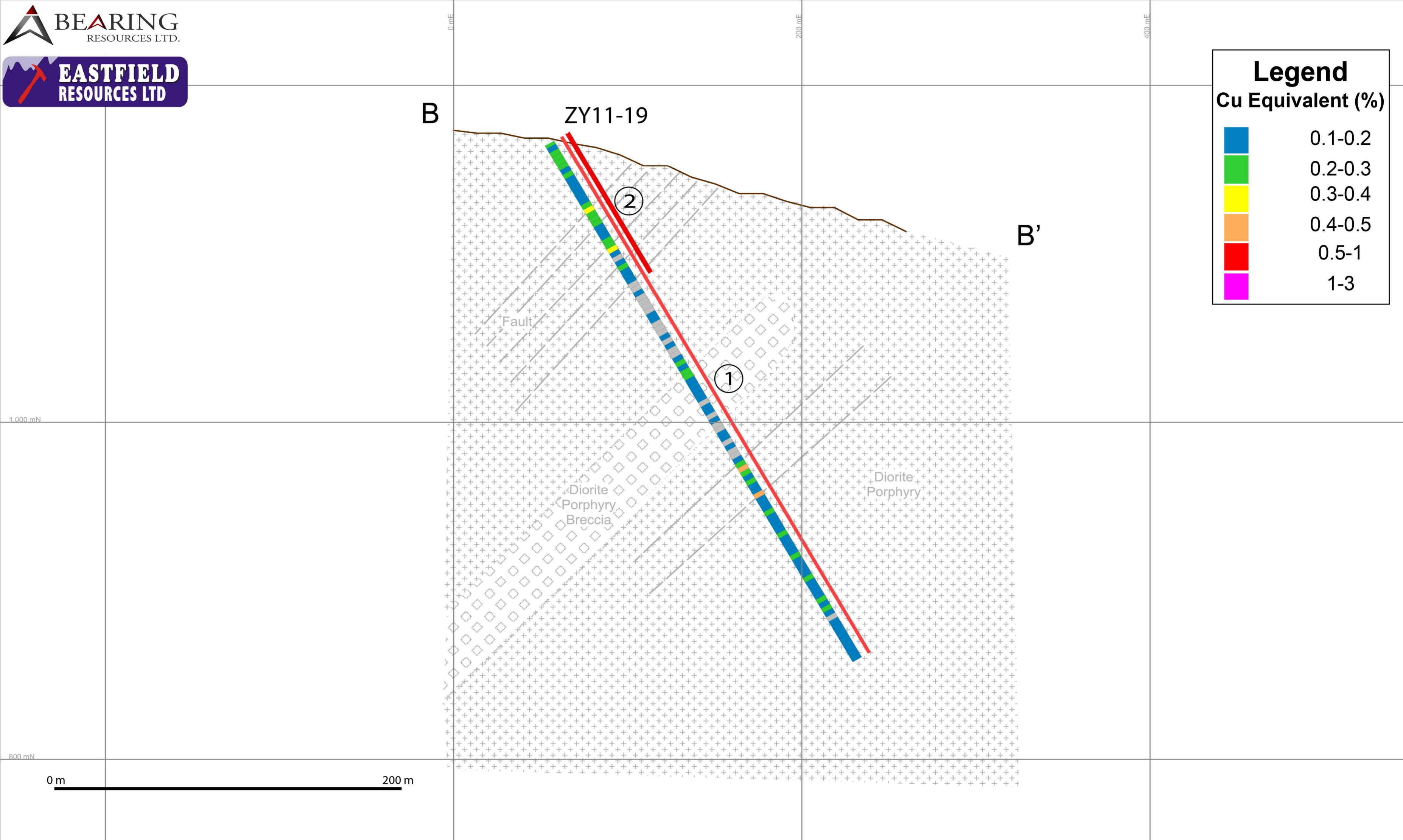
0 m 500 m

ZYMO PROJECT - FM ZONE SECTION A - A'



Hole	ID	Length (m)	Au (g/t)	Cu (%)	Cu eq. (%)
ZY11-18	1	144.0	0.15	0.22	0.32
ZY11-18	2	78.0	0.20	0.26	0.40

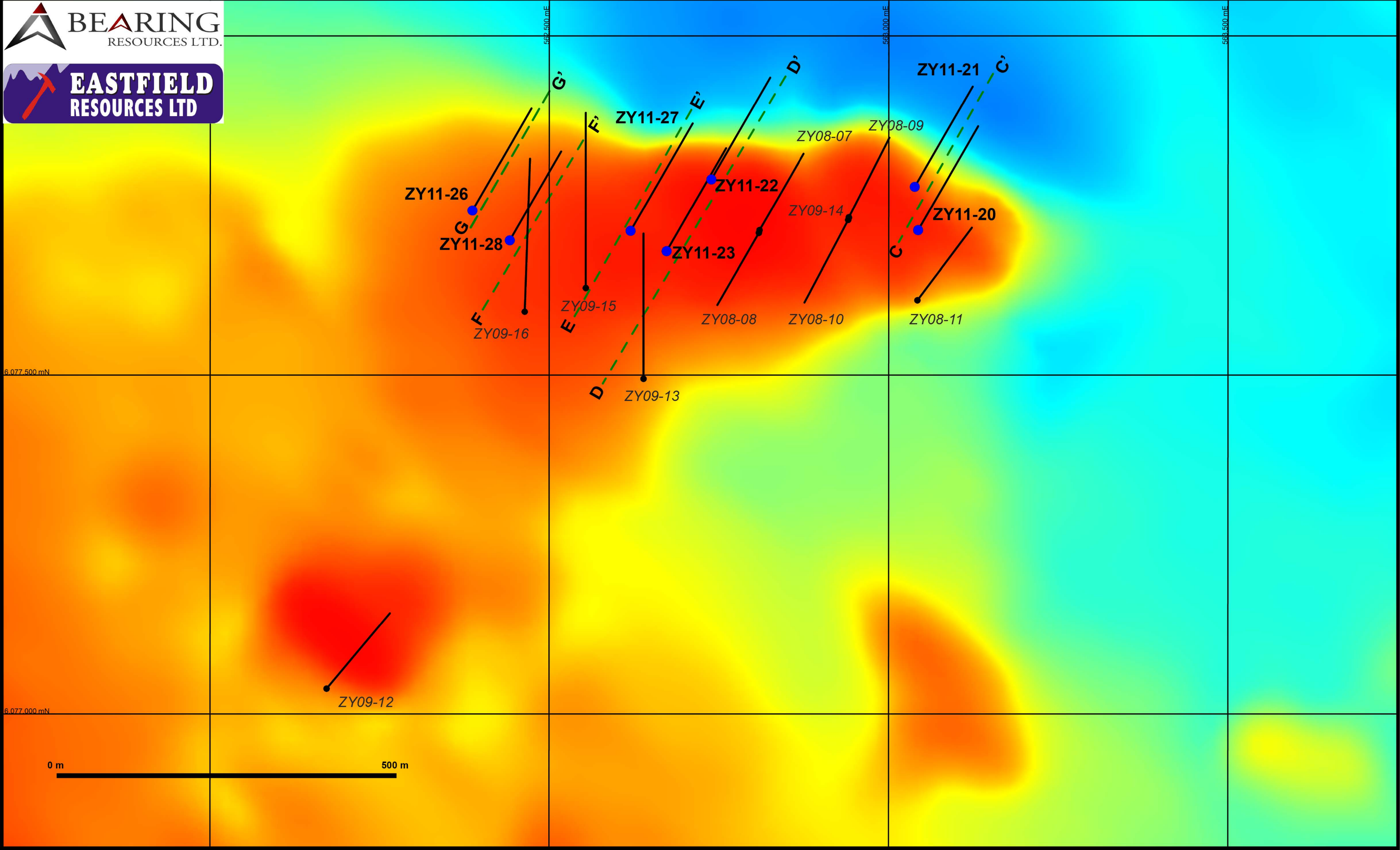
ZYMO PROJECT - FM ZONE SECTION B - B'



Hole	ID	Length (m)	Au (g/t)	Cu (%)	Cu eq. (%)
ZY11-19	1	353.5	0.08	0.11	0.16
ZY11-19	2	95.0	0.09	0.13	0.19

Copper equivalent calculated with \$US1200/oz Au and \$US2.50/lb Cu and 100% metallurgical recoveries.

ZYMO PROJECT - HOBBS ZONE DRILL PLAN ON REDUCED TO POLE MAGNETICS



6,077,500 mN

6,077,000 mN

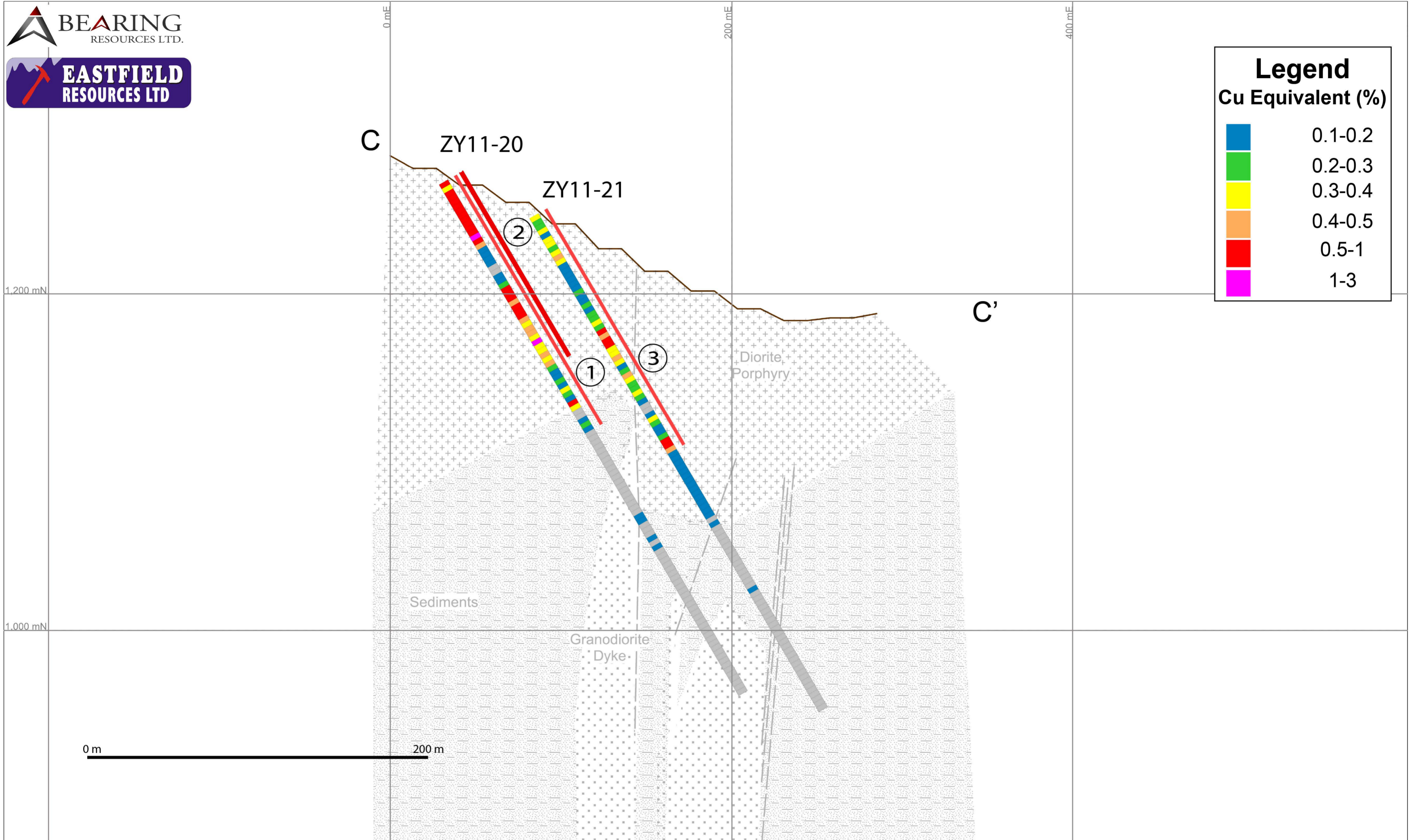
5,682,500 mE

5,683,000 mE

5,683,500 mE

0 m 500 m

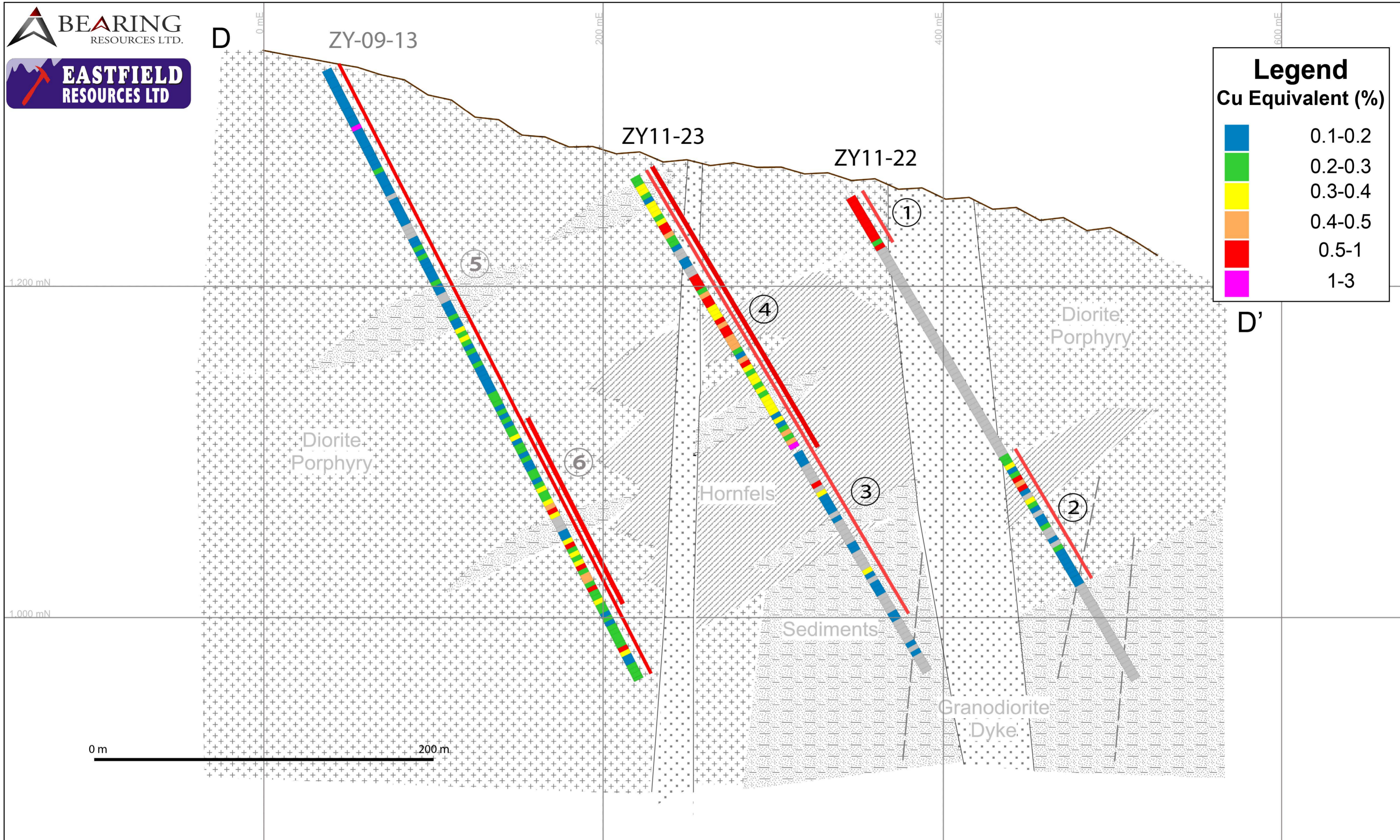
ZYMO PROJECT - HOBBS ZONE SECTION C - C'



Hole	ID	Length (m)	Au (g/t)	Cu (%)	Cu eq. (%)
ZY11-20	1	171.0	0.24	0.29	0.46
ZY11-20	2	126.0	0.28	0.34	0.54
ZY11-21	3	162.0	0.15	0.18	0.29

Copper equivalent calculated with \$US1200/oz Au and \$US2.50/lb Cu and 100% metallurgical recoveries.

ZYMO PROJECT - HOBBS ZONE SECTION D - D'



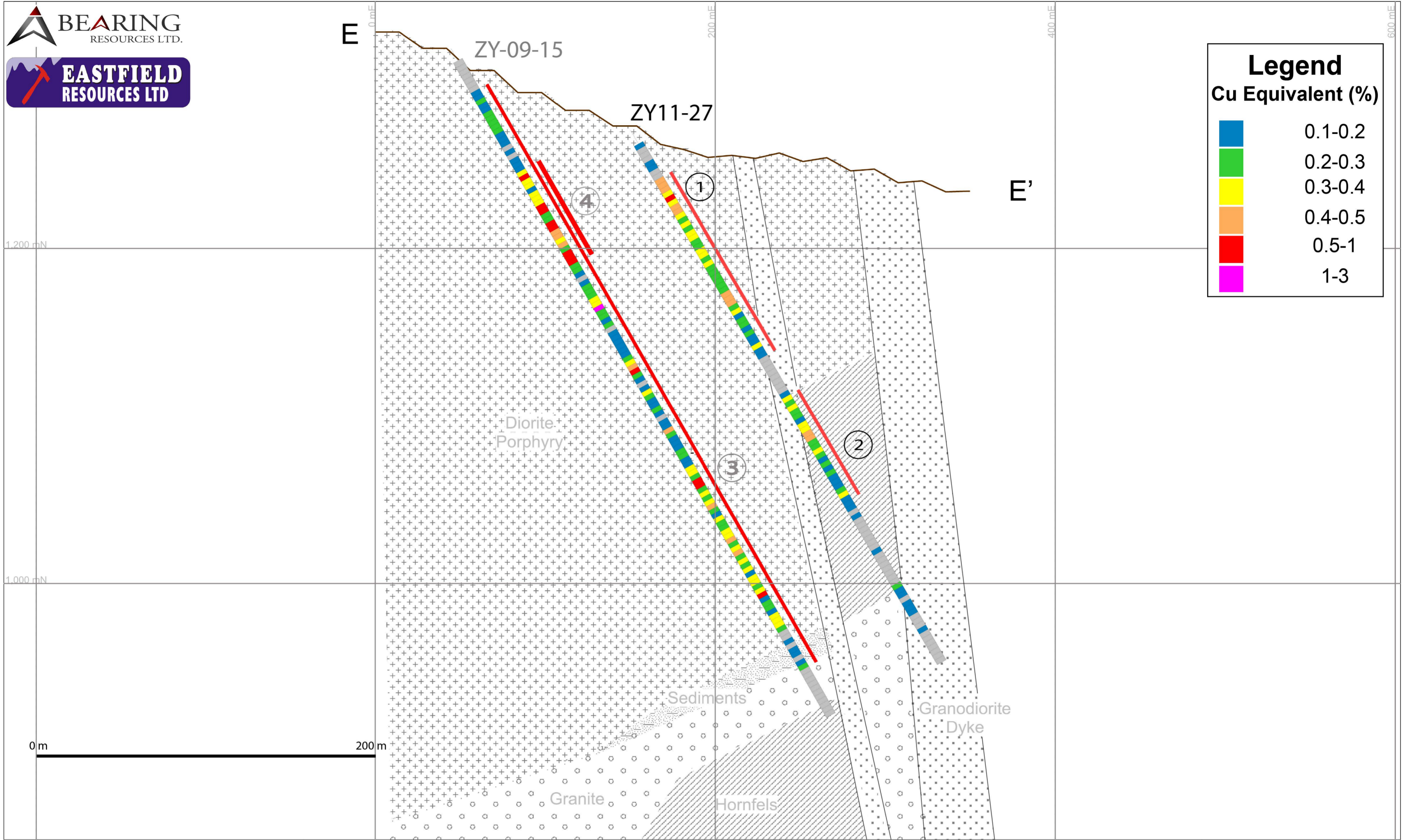
Legend	
Cu Equivalent (%)	
Blue	0.1-0.2
Green	0.2-0.3
Yellow	0.3-0.4
Orange	0.4-0.5
Red	0.5-1
Magenta	1-3

Hole	ID	Length (m)	Au (g/t)	Cu (%)	Cu eq. (%)
ZY11-22	1	36.0	0.34	0.43	0.67
ZY11-22	2	90.0	0.08	0.16	0.22
ZY11-23	3	309.0	0.13	0.21	0.30
ZY11-23	4	195.0	0.18	0.29	0.41

Hole	ID	Length (m)	Au (g/t)	Cu (%)	Cu eq. (%)
ZY-09-13	5	425.0	0.09	0.15	0.21
ZY-09-13	6	129.0	0.12	0.20	0.29

Copper equivalent calculated with \$US1200/oz Au and \$US2.50/lb Cu and 100% metallurgical recoveries.

ZYMO PROJECT - HOBBS ZONE SECTION E - E'

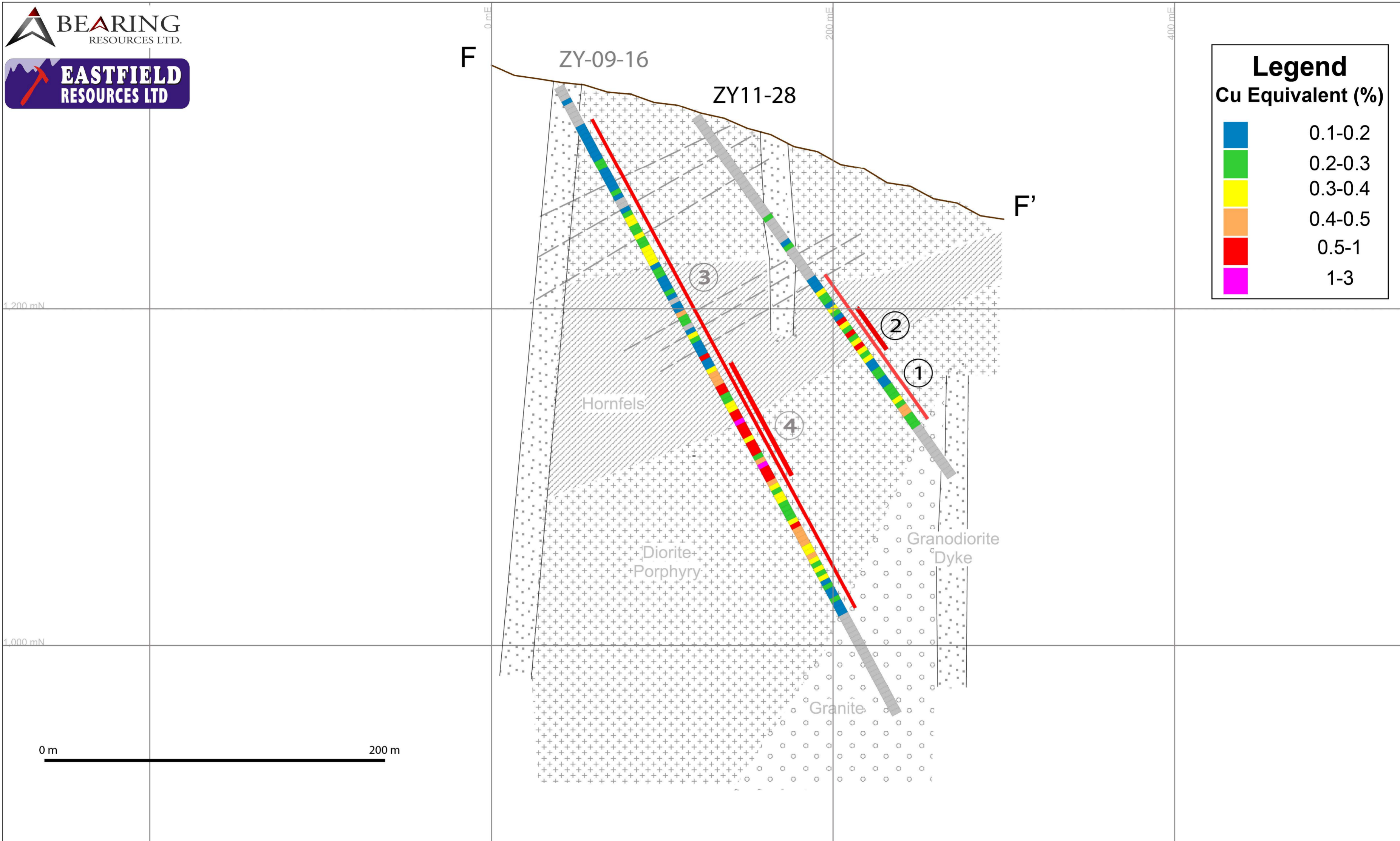


Hole	ID	Length (m)	Au (g/t)	Cu (%)	Cu eq. (%)
ZY11-27	1	123.0	0.15	0.21	0.31
ZY11-27	2	72.0	0.11	0.19	0.27

Hole	ID	Length (m)	Au (g/t)	Cu (%)	Cu eq. (%)
ZY-09-15	3	411.0	0.11	0.21	0.29
ZY-09-15	4	66.0	0.20	0.33	0.47

Copper equivalent calculated with \$US1200/oz Au and \$US2.50/lb Cu and 100% metallurgical recoveries.

ZYMO PROJECT - HOBBS ZONE SECTION F - F'

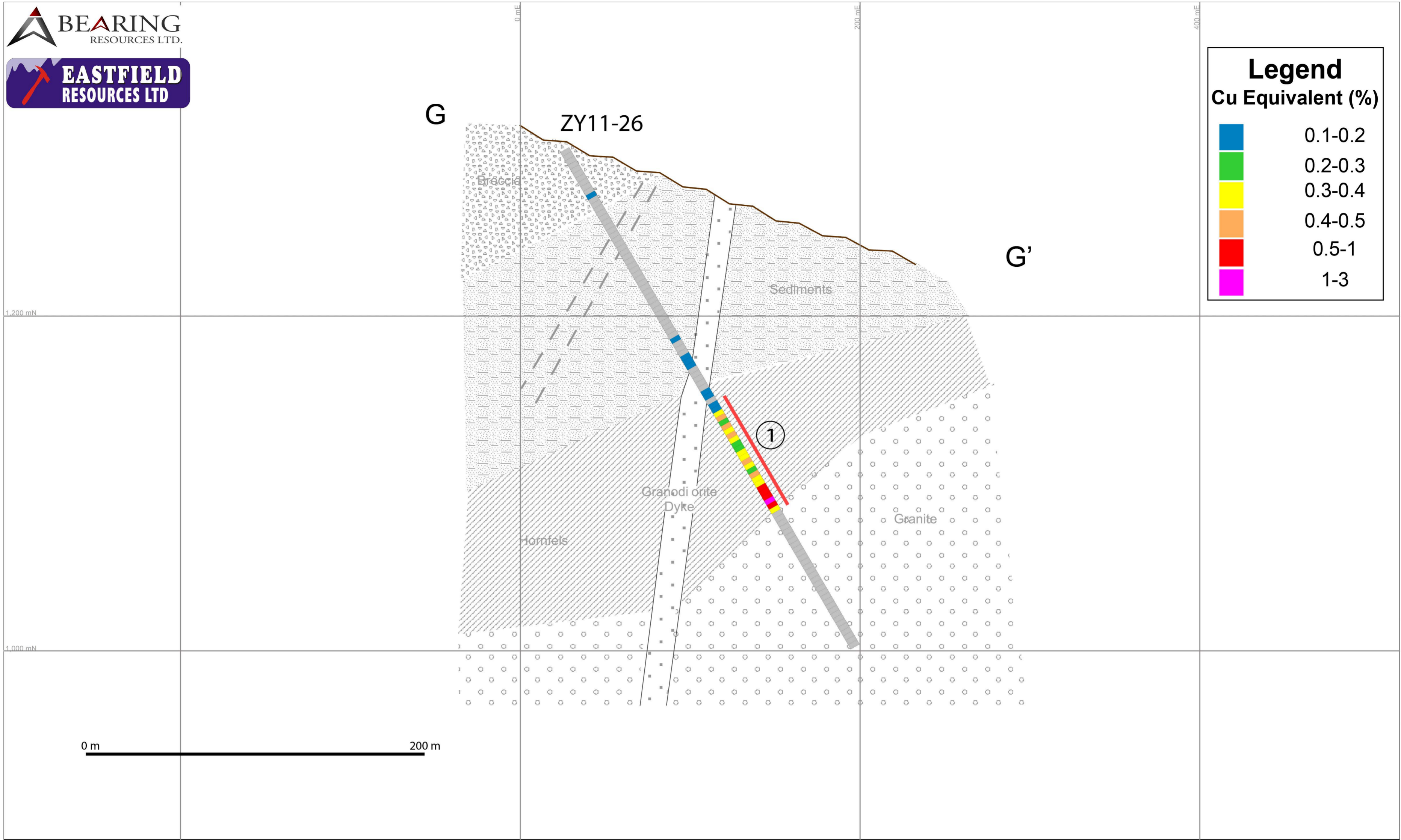


Hole	ID	Length (m)	Au (g/t)	Cu (%)	Cu eq. (%)
ZY11-28	1	105.0	0.14	0.20	0.30
ZY11-28	2	30.0	0.19	0.30	0.43

Hole	ID	Length (m)	Au (g/t)	Cu (%)	Cu eq. (%)
ZY-09-16	3	339.0	0.13	0.23	0.32
ZY-09-16	4	78.0	0.26	0.41	0.59

Copper equivalent calculated with \$US1200/oz Au and \$US2.50/lb Cu and 100% metallurgical recoveries.

ZYMO PROJECT - HOBBS ZONE SECTION G - G'



Hole	ID	Length (m)	Au (g/t)	Cu (%)	Cu eq. (%)
ZY11-26	1	75.0	0.20	0.29	0.43

Copper equivalent calculated with \$US1200/oz Au and \$US2.50/lb Cu and 100% metallurgical recoveries.